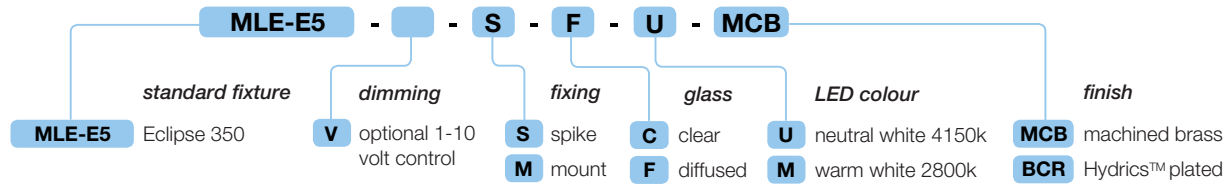


# Eclipse 5

LED pathlight

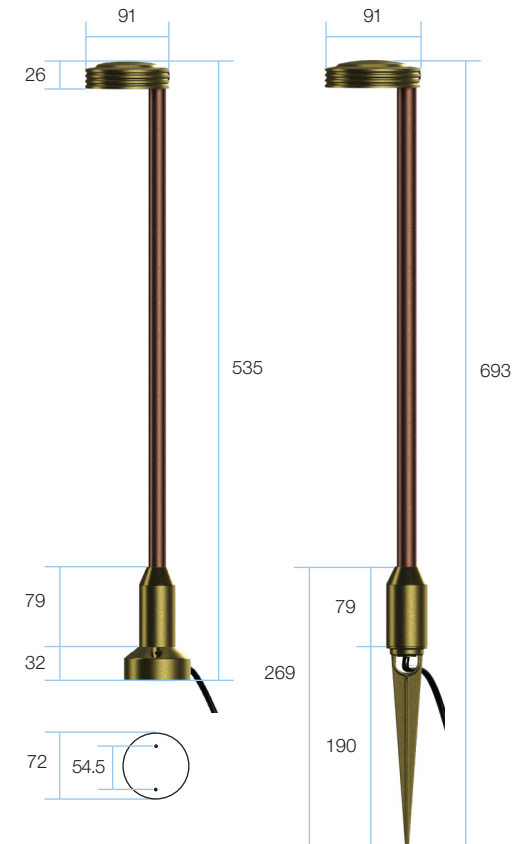
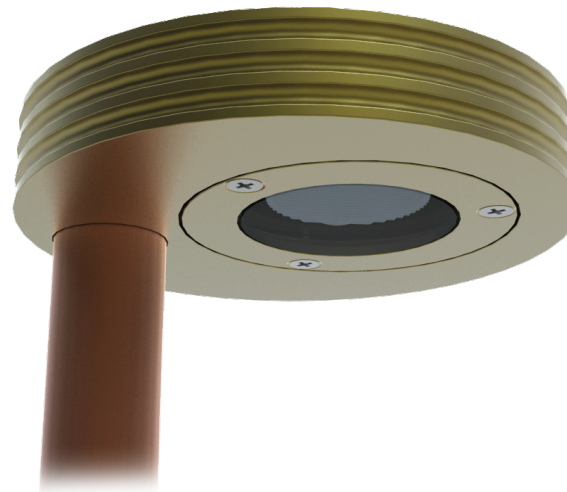
ILLUMINATE YOUR WORLD



Example showing how to specify a Luminaire's options.

## Specifications

<b>Ip rating</b>	Ingress Protection - IP67
<b>Materials</b>	thermal brass with optional Hydrics™ plated finish
<b>Glass</b>	clear or diffused 5mm tempered glass
<b>Light Source</b>	Cree MC-E quad chip LED available in warm white 2800K neutral white 4150K
<b>CRI</b>	90 80
<b>Luminous intensity</b>	up to 300 lumens - IES photometric files available 70% lumen maintenance at 50,000 hours
<b>Power</b>	5 watts total including integral VDi driver
<b>Efficacy</b>	up to 60 lumens per watt
<b>VDi™ driver technology</b>	integral low voltage constant current driver can compensate for voltage drop and fluctuations
<b>VDi™ thermal intelligence</b>	optimal LED junction temperatures are maintained if the ambient temperature exceeds 40° Celcius.
<b>Dimming</b>	optional input for 1-10 volt control
<b>Power supply</b>	Optimo toroidal transformer 25V AC output MLE-OT-100 can power from 1 to 20 luminaires MLE-OT-200 can power from 1 to 40 luminaires



all dimensions are in millimetres